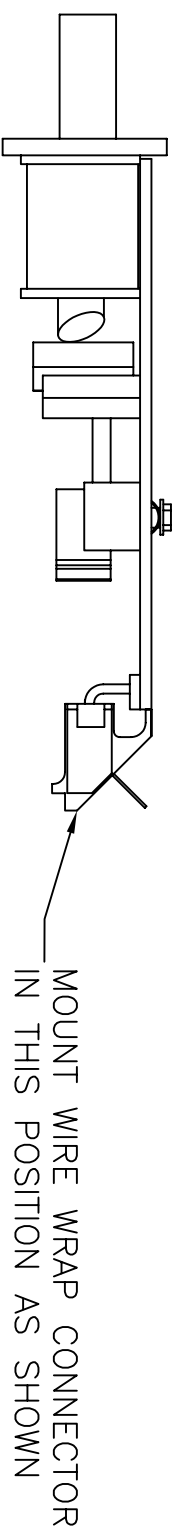
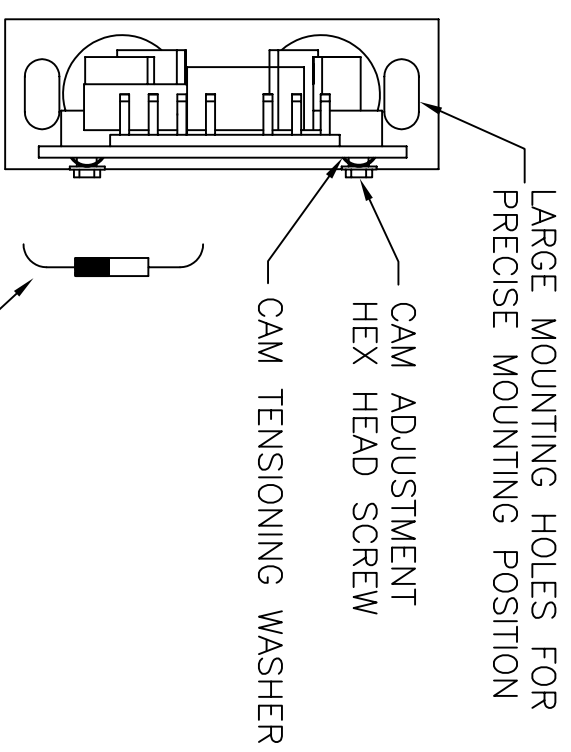
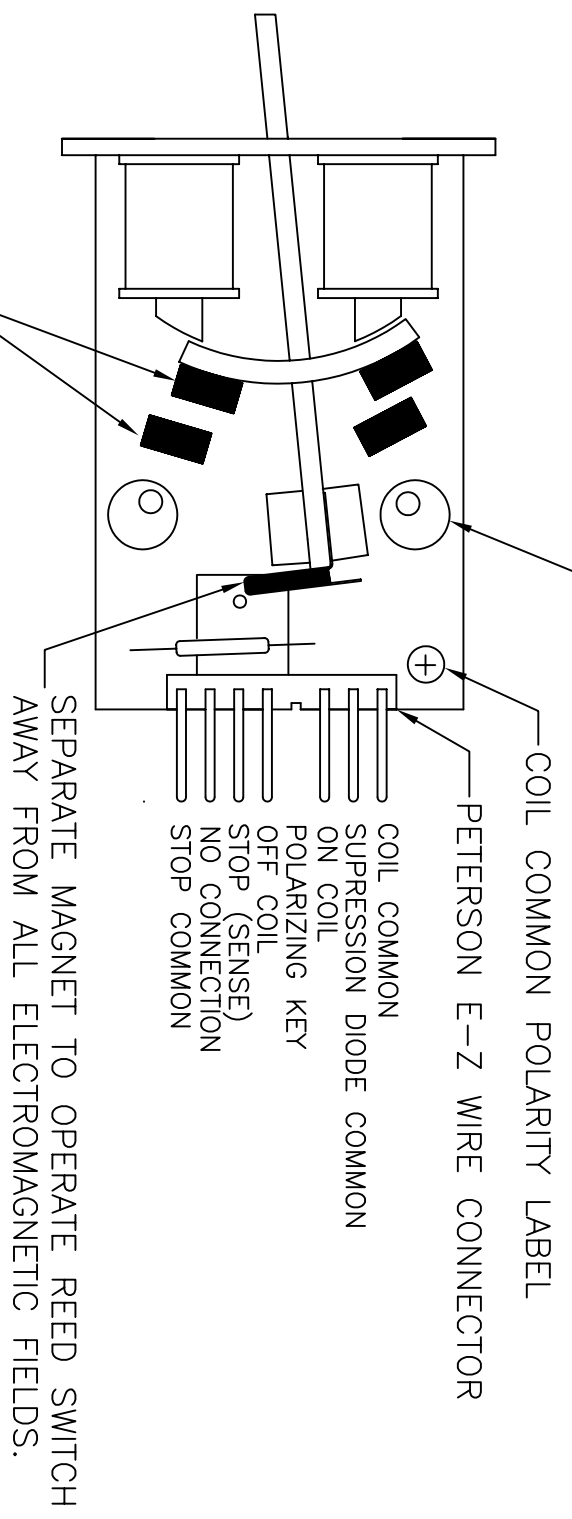


REVISIONS				
REV	E.C.O.	DESCRIPTION	DATE	APPROVED



STOP ADJUSTMENT CAMS: EASILY ACCESSIBLE FROM BEHIND WITH A 1/4" OPEN END WRENCH. SIMPLY ROTATE THE HEX SCREW TO DESIRED POSITION.



OPTIONAL SUPPRESSION DIODE: CLIP THE LEADS SHORT AND SOLDER INTO HOLES. (SEE NOTES).

- NOTES:
1. A SUPPRESSION DIODE IS SUPPLIED BY SPECIAL ORDER ONLY. IF YOU WISH TO ADD ONE, IT CAN BE SOLDERED TO THE BACK SIDE OF THE CIRCUIT BOARD BETWEEN THE SUPPRESSION DIODE COMMON PIN AND THE STOP (SENSE) PIN.
  2. IF POSITIVE STOP COMMON IS USED, THE BAND ON THE DIODE SHOULD BE TOWARDS THE STOP (SENSE) PIN AND THE SUPPRESSION DIODE COMMON SHOULD BE CONNECTED TO NEGATIVE.

UNLESS OTHERWISE SPECIFIED		BY	DATE	<p><b>peterson</b> ELECTRO-MUSICAL PRODUCTS INC. / ALSIP, ILLINOIS 60803</p> <p>INSTALLATION INSTRUCTIONS SHEET, POWERTAB</p>	
DIMENSIONS ARE IN INCHES - TOLERANCES:		DRAWN	TJP		
DECIMAL	FRACTIONAL	CHK'D			
.X=±.060 .XX=±.015 .XXX=±.005	±1/64 ANGULAR ±1°	APP'D	ISSUE DATE		
DO NOT SCALE THIS DRAWING		MATERIAL		SIZE	REV.
FINISH				B	
				NO.	190321
				SCALE	NONE
				SHEET	1 OF 1